



Trust
Land Office

Executive Director Report

1/22/26 Jusdi Warner



Board Action Update

- Carbon Program
- Subdivision Development Program
- Mineral Reconnaissance Program
- Trust Authority Building





Board Action Updates (continued)

- Mineral Lease (MHT 9400763) - Northern Region - Pending
- Resource Management Strategy - Pending
- Easement - (MHT 9201031) - Southcentral Region - Complete
- Easement - (MHT 9400899) - Northern Region - Pending
- Oil & Gas Lease - (MHT 9300102) - Southcentral Region - Pending
- Mineral Lease - (MHT 9400921) - Northern Region - Pending
- Surface Lease - (MHT 9400917) - Northern Region - Pending
- Negotiated Sale - (MHT 9400897) - Northern Region - Completed
- Negotiate Sale - (MHT 9101417) - Southeast Region - Completed
- Easement - (MHT 9101418) - Southeast Region - Pending
- Negotiated Sale - (MHT 9101419) - Southeast Region - Outcry

Revenue Picture (12/31/25)

Principal

	FY25 YTD	FY26 YTD	FY26 YTD Goal	(Under)/Over	FY26 Annual Goal	% of FY26 Annual Goal
Coal	\$ 103,186	\$ 153,789	\$ 150,000	\$ 3,789	\$ 300,000	51%
Oil & Gas	\$ 198,390	\$ 94,675	\$ 180,000	\$ (85,325)	\$ 360,000	26%
Minerals	\$ -	\$ -	\$ -	\$ -	\$ 1,200,000	0%
Materials	\$ 9,320	\$ 40,460	\$ 45,000	\$ (4,540)	\$ 90,000	45%
Timber	\$ 448,300	\$ 223,021	\$ 605,628	\$ (382,607)	\$ 1,211,250	18%
Land	\$ 3,248,535	\$ 2,341,805	\$ 2,576,500	\$ (234,695)	\$ 5,153,000	45%
REIP ¹	\$ -	\$ -	\$ -	\$ -	\$ -	-
PRRE ²	\$ -	\$ -	\$ -	\$ -	\$ -	-
Ground Lease Portfolio	\$ -	\$ -	\$ -	\$ -	\$ -	-
Total³	\$ 4,007,732	\$ 2,853,750	\$ 3,557,128	\$ (703,378)	\$ 8,314,250	34%

Notes:

1. REIP: Real Estate Investment Portfolio; No longer managed by TLO; revenue will be zero

2. PRRE: Program Related Real Estate

3. Alder DA03 report used for revenue

4. Estimates for deferred revenue totalling \$179,796 have been manually subtracted from this report.

Revenue Picture (12/31/25)

Income⁴

	FY25 YTD	FY26 YTD	FY26 YTD Goal	(Under)/Over	FY26 Annual Goal	% of FY26 Annual Goal
Coal	\$ 14,961	\$ 10,844	\$ 1,200	\$ 9,644	\$ 12,400	87%
Oil & Gas	\$ -	\$ 2,846	\$ -	\$ 2,846	\$ 7,100	40%
Minerals	\$ 878,077	\$ 1,012,825	\$ 263,590	\$ 749,235	\$ 979,252	103%
Materials	\$ -	\$ -	\$ -	\$ -	\$ -	-
Timber	\$ 79,112	\$ 39,357	\$ 106,872	\$ (67,515)	\$ 213,750	18%
Land	\$ 1,040,966	\$ 1,074,248	\$ 1,048,800	\$ 25,448	\$ 2,060,600	52%
REIP ¹	\$ 12,365,000	\$ -	\$ -	\$ -	\$ -	0%
PRRE ²	\$ 211,953	\$ 152,500	\$ 81,162	\$ 71,338	\$ 114,662	133%
Ground Lease Portfolio	\$ 727,727	\$ 547,121	\$ 272,912	\$ 274,209	\$ 545,823	100%
Total ³	\$ 15,317,797	\$ 2,839,741	\$ 1,774,536	\$ 1,065,205	\$ 3,933,587	72%

Notes:

1. REIP: Real Estate Investment Portfolio; No longer managed by TLO; revenue will be zero
2. PRRE: Program Related Real Estate
3. Alder DA03 report used for revenue
4. Estimates for deferred revenue totalling \$179,796 have been manually subtracted from this report.

Revenue Picture (12/31/25)

Total

	FY25 YTD	FY26 YTD	FY26 YTD Goal	(Under)/Over	FY26 Annual Goal	% of FY26 Annual Goal
Coal	\$ 118,148	\$ 164,633	\$ 151,200	\$ 13,433	\$ 312,400	53%
Oil & Gas	\$ 198,390	\$ 97,521	\$ 180,000	\$ (82,479)	\$ 367,100	27%
Minerals	\$ 878,077	\$ 1,012,825	\$ 263,590	\$ 749,235	\$ 2,179,252	46%
Materials	\$ 9,320	\$ 40,460	\$ 45,000	\$ (4,540)	\$ 90,000	45%
Timber	\$ 527,412	\$ 262,378	\$ 712,500	\$ (450,122)	\$ 1,425,000	18%
Land	\$ 4,289,501	\$ 3,416,053	\$ 3,625,300	\$ (209,247)	\$ 7,213,600	47%
REIP ¹	\$ 12,365,000	\$ -	\$ -	\$ -	\$ -	0%
PRRE ²	\$ 211,953	\$ 152,500	\$ 81,162	\$ 71,338	\$ 114,662	133%
Ground Lease Portfolio	\$ 727,727	\$ 547,121	\$ 272,912	\$ 274,209	\$ 545,823	100%
Total ³	\$ 19,325,529	\$ 5,693,491	\$ 5,331,664	\$ 361,827	\$ 12,247,837	46%

Notes:

1. REIP: Real Estate Investment Portfolio; No longer managed by TLO; revenue will be zero
2. PRRE: Program Related Real Estate
3. Alder DA03 report used for revenue
4. Estimates for deferred revenue totalling \$179,796 have been manually subtracted from this report.



Land Sales

2025 Fall Competitive Land Sale

- 22 Parcels sold from the 44 offered
- 39 Bids received
- Cities/areas parcels were sold-
 - Delta Junction, Delta Junction Townsite
 - Fox, Olnes East S/D
 - Harding Lake, Little Harding Lake S/D
 - Kenai, Kenai Spur Highway
 - Ketchikan, Berry Patch Subdivision
 - Ketchikan, Mud Bight Alaska S/D
 - Little Jakolof Bay, East Oyster Cove
 - Meyers Chuck, Meyers Chuck S/D
 - Nikiski, Emerald Subdivision
 - Talkeetna, Chase Trails
 - Wrangell, Wrangell Island East S/D
 - Yakutat, Yakutat
- Revenue: **\$1,616,656.00**
- Thank you, letters, shipped on 1/16/2026 to all bidders



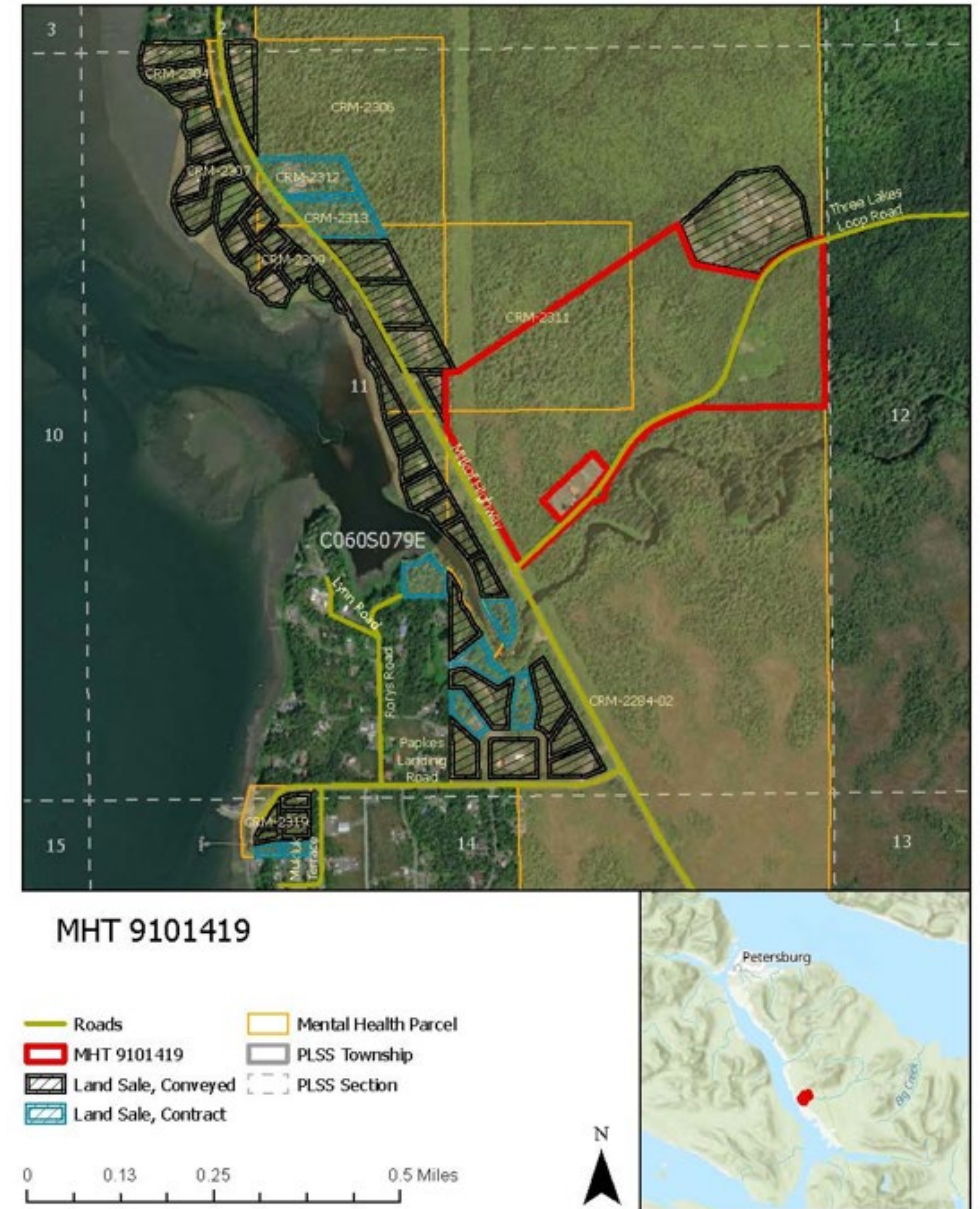


Land Sales

*Interest rate: 9.75% as of 1/1/2026

- **Negotiated Sales**

- Six Sales (one pending) - \$2,048,152
 - FIVE completed by issuance of QCD - \$1,598,152
 - Hollis, Clark Bay Peninsula S/D
 - Kenai, Kenai River
 - Fairbanks, Farm Loop near Eielson
 - Ketchikan, Berry Patch Subdivision
 - Little Tutka near Homer
 - Petersburg parcel
 - Competing offers at \$450k and \$460k
 - Outcry





Land Sales

*Interest rate: 9.75% as of 1/1/2026

- **Over the Counter (OTC)**

- 22 new parcels uploaded to TLO website on Jan. 14, 2026
 - Cities/areas:
 - Fox , Olnes West S/D
 - Kasilof , Lower Cohoe Loop
 - Ketchikan , Berry Patch Subdivision
 - Ketchikan , Mud Bight Alaska S/D
 - Little Jakolof Bay , East Oyster Cove
 - Meyers Chuck , Meyers Chuck S/D
 - Nikiski , Wonder View Subdivision (Barr)
 - Petersburg , Scow Bay Group of Homesites
 - Sitka , Middle Island Subdivision
 - Sterling , Trout View S/D
 - Wrangell , Thoms Place
 - Wrangell , Wrangell Island East S/D
- FIVE sales - **\$295,540.00**
 - Four under contract
 - One pending issuance of contract

Land Sales

OTC: <https://alaskamentalhealthtrust.org/trust-land-office/land-sales/otc/>

*click on OPEN THE INTERACTIVE MAP



Alaska Mental Health Trust Land Office

Over the Counter Land Sales

For more information on how to purchase these properties, please visit the Mental Health Over the Counter (OTC) website.

[OTC Website](#)

Search

Sort by Parcel



9100162

8.24 acre parcel, located in the Wrangell, Shoemaker Bay area.

\$260,000

[More Info](#)



9100392

4.38 acre parcel, located in the Wrangell, Thoms Place area.

\$24,500

[More Info](#)



9100501

2.14 acre parcel, located in the Sitka, Middle Island S/D area.

\$114,000

[More Info](#)



9100836

1.75 acre parcel, located in the Meyers Chuck, Meyers Chuck S/D area.

[More Info](#)



Mining

- Gold Price
- Palmer Project; Constantine
 - Lease
- Fort Knox Gold Mine; Kinross
 - Land Authorizations
 - Lease
- Livengood Gold Project; Towerhill Mines
 - Lease
 - Federal Claim Conversion





Conglomerate

- Timber
- Roads FRPA
- Legislative/Media
- Engagement
- Resource Management Strategy/Strat Plan
- Tourism
- PRRE/Below Market Leases
- AMPS
- Matsu Christmas Tree
- Staff Recognition

